

# Moodle Assignments

## Important Assignment Settings

There are several important settings to be aware of when submitting assignments in Moodle.

These include:

- File Submission versus Online Text
- Due Dates and Cutoff Dates
- Draft versus Submission

## File Submission vs. Online Text

There are two types of assignments in Moodle: File Submission and Online Text.

- **File Submission** assignments require you to attach a file and submit for grading. This might include essays, reports, spreadsheets, presentations, or any other file or document relevant to your course.
- **Online Text** assignments require you to type a response directly into a text box in Moodle.

Many assignments will include both file submission and online text, so be sure to read the instructions for your assignment carefully.

## Due Dates vs. Cutoff Dates

The **Due date** is the date and time the assignment is due. Assignments submitted after this date may be counted late and points deducted from the overall grade. Late submissions will be marked in red text on the assignment grading page.

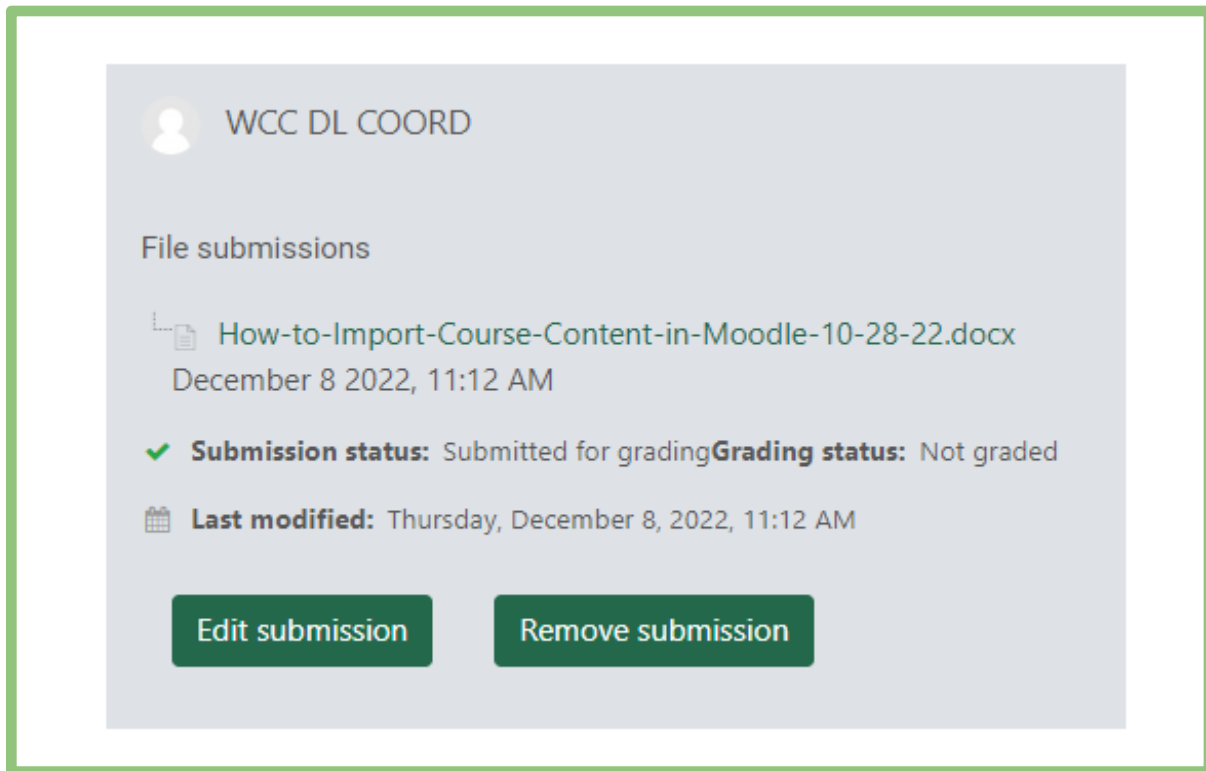
The **Cutoff date** is the date and time the assignment is closed for submissions. Instructors may deduct points for submissions through this date. You will no longer be allowed to submit the assignment beyond this date.

## Draft vs. Submission

Depending on how your instructor has set up an assignment, when you submit text or a file to a Moodle assignment, the submission may be considered to be in Draft mode until the assignment reaches the due date. You may be able to remove, edit, and re-submit draft submissions until the due date when the files are submitted for grading by the assignment tool.

Once you have submitted an assignment, if you revisit the assignment page you will be able to follow the status of your assignment.

You will see the submission status (Submitted for Grading, or Draft (not submitted), the grading status, modification date, File submissions and Submission comments.



The screenshot shows a submission card for a user named 'WCC DL COORD'. Under the heading 'File submissions', there is a document icon and the filename 'How-to-Import-Course-Content-in-Moodle-10-28-22.docx' with a timestamp of 'December 8 2022, 11:12 AM'. Below this, a green checkmark indicates the 'Submission status: Submitted for grading' and the 'Grading status: Not graded'. A calendar icon shows the 'Last modified' date as 'Thursday, December 8, 2022, 11:12 AM'. At the bottom, there are two green buttons: 'Edit submission' and 'Remove submission'.

If the due date of the assignment has passed, the option to edit your submission will disappear.

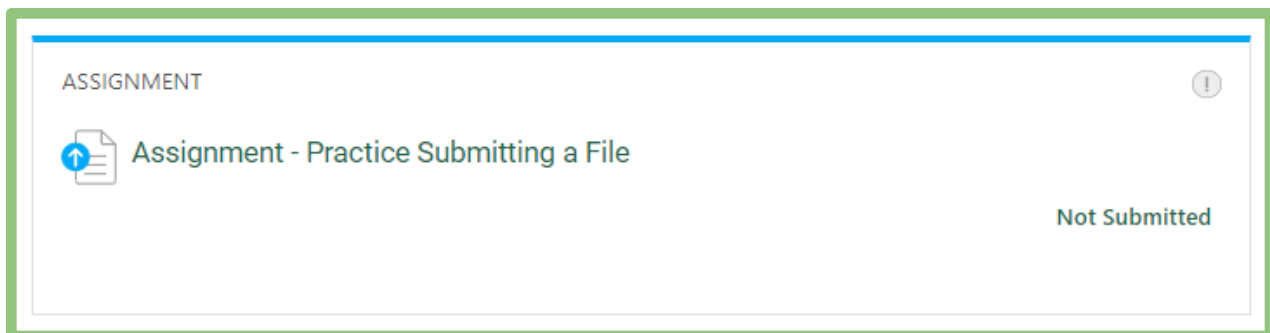
You may have the option to modify your assignment if your instructor has allowed this option.

To modify your assignment, click on the **Edit submission** button, select the uploaded file, click **delete**, and then upload the correct version.

If you are ready to submit the final version of your assignment, click on **Submit Assignment**.

## Submitting an Assignment

To access assignment instructions and upload a file for submission click the assignment name link (example highlighted below).



The screenshot shows an assignment card with the title 'ASSIGNMENT' and a help icon. Below the title is a document icon with an upward arrow and the text 'Assignment - Practice Submitting a File'. In the bottom right corner, it says 'Not Submitted'.

You will then see the assignment instructions, the current status of the assignment, and the **Add submission** button.

Home / My Courses / 2023SP-Moodle-101-for-Students / Practice Activities / Assignment - Practice Submitting a File

## 2023SP-Moodle-101-for-Students

### Assignment - Practice Submitting a File

**To do:** Make a submission

This activity will demonstrate how to submit a file using the assignment activity.

Use a word processing program (such as Microsoft Word) to create a document containing the following information:

- Your full name
- Your major
- Your career goal

Save your document as "YourLastname\_assignment1"

Click "Add Submission" to upload your document.

Remember to click "Submit" to move your assignment from draft to submission!

Submission status: No attempt

Grading status: Not graded

**Add submission**

← Forum - Practice Posting to a Forum      Jump to...      Assignment - Practice Submitting an Online Text Assignment →

## File Submission Assignments

A file submission assignment requires you to upload a file to Moodle.

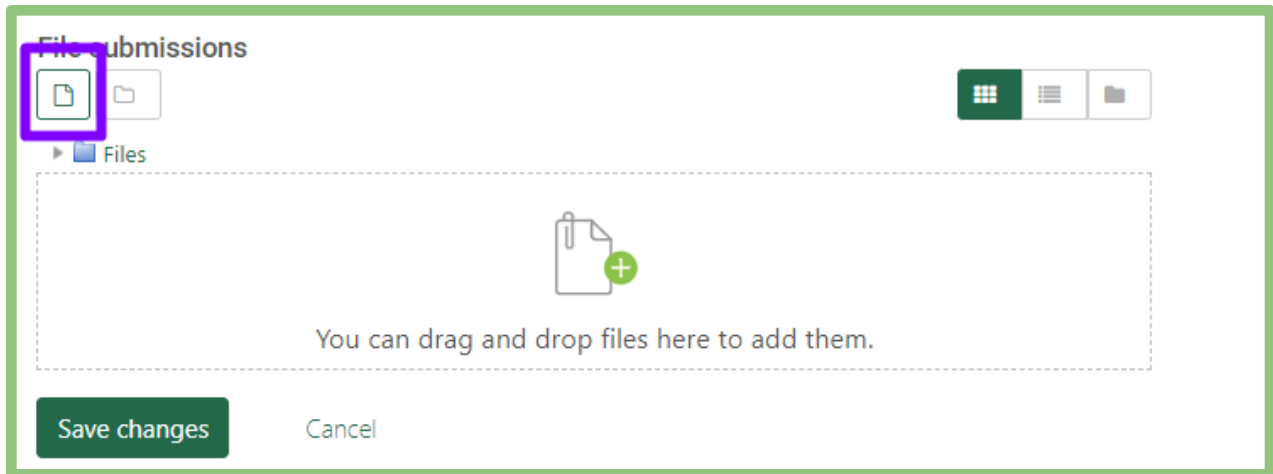
1. Click the **Add submission** button.

Moodle Student      **Submission status:** No attempt

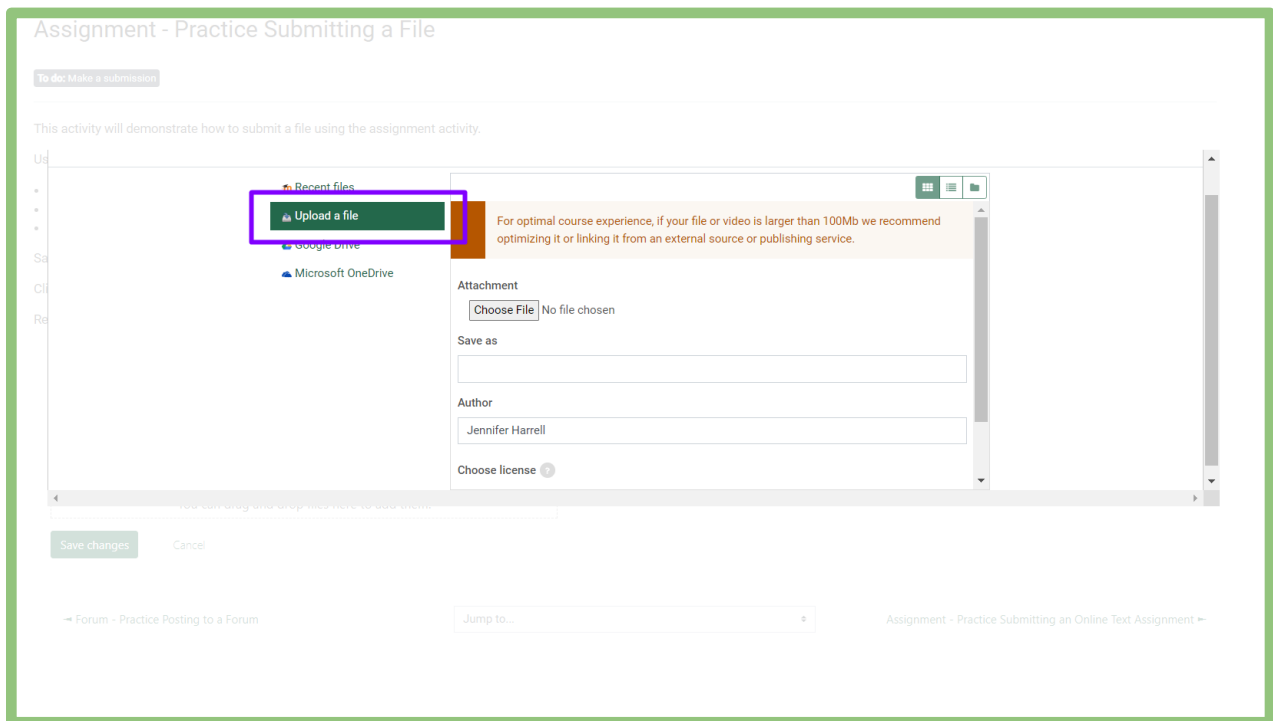
**Grading status:** Not graded

**Add submission**

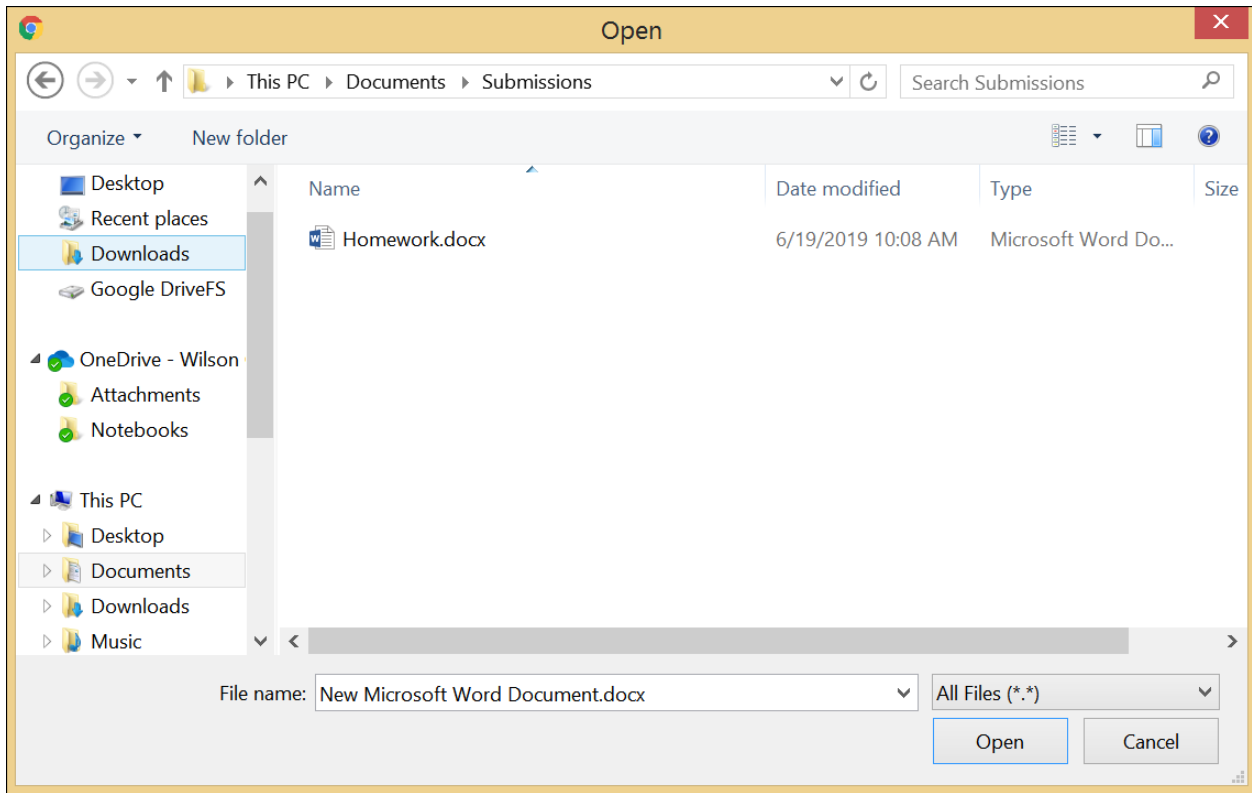
2. In the **File Submissions** box, you can either “drag or drop” a file from your computer into the box, or Click on the **Add** icon (outlined below) under File Submissions. If you use the drag and drop method, skip to Step 6.



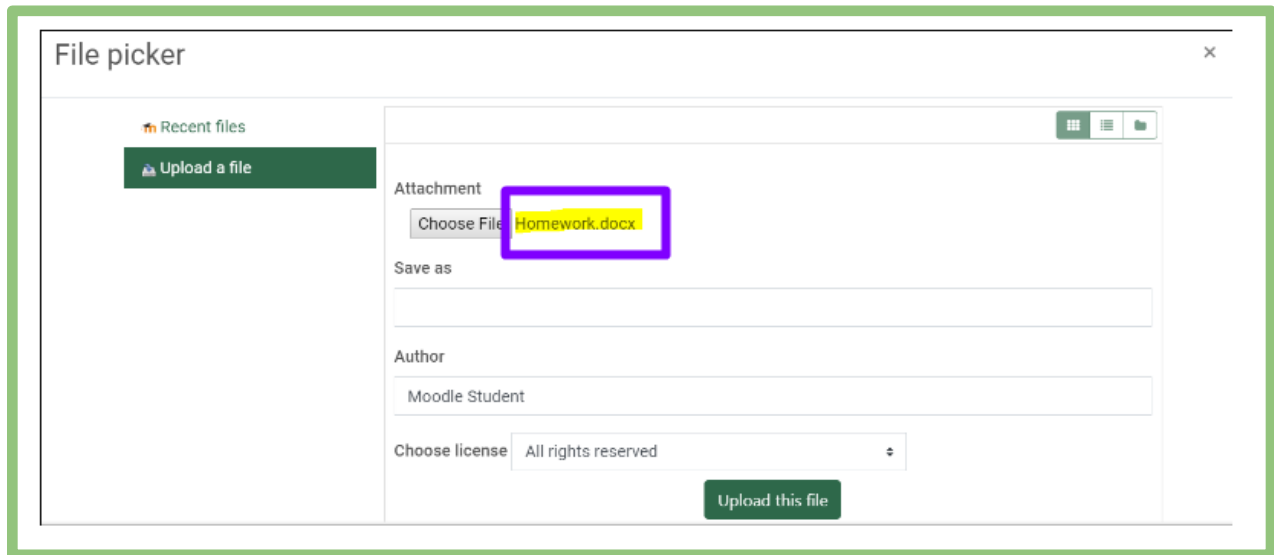
3. If you use the Add File method, click on **Upload a file**. Then click on **Choose File**.



4. Locate and select the file you want to attach and click the **Open** button.



5. Verify that your file appears next to the **Choose File** button, and then click **Upload this file**.



6. Next, verify that your file appears in the File submissions box (example file circled below) and then click **Save changes**.

## Assignment - Practice Submitting a File

**To do:** Make a submission

This activity will demonstrate how to submit a file using the assignment activity.

Use a word processing program (such as Microsoft Word) to create a document containing the following information:

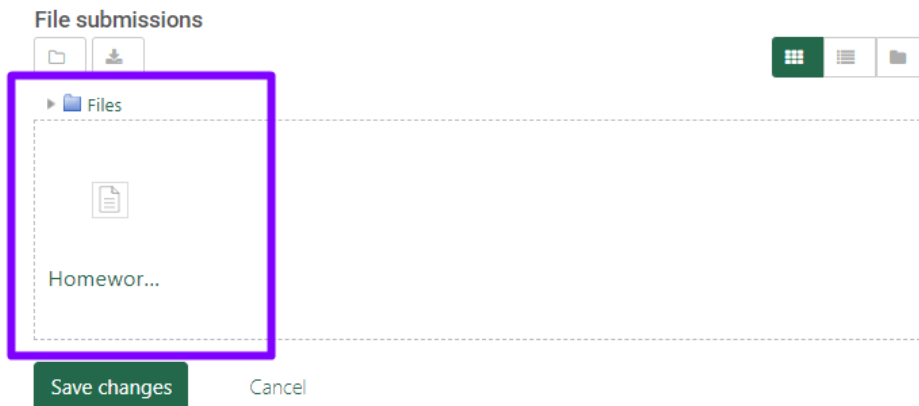
- Your full name
- Your major
- Your career goal

Save your document as "YourLastname\_assignment1"

Click "Add Submission" to upload your document.

Remember to click "Submit" to move your assignment from draft to submission!

**File submissions**



File submissions

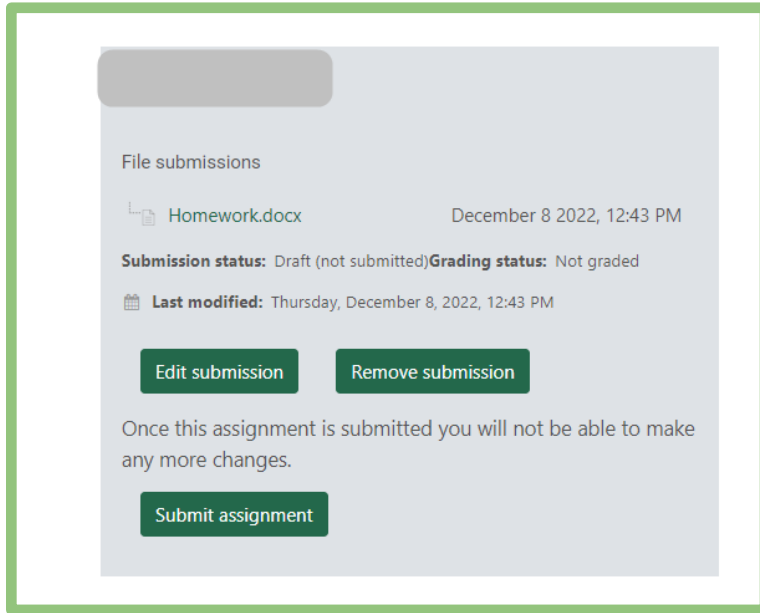
Files

Homewor...

Save changes Cancel

7. You will then be presented with a **File Submission** box that will show you that status of your submission and your uploaded file. If allowed, you can edit this submission up until the due date. Once you are satisfied with your submission, click **Submit Assignment**.

*Note that your file is not officially submitted until you click on the Submit Assignment button or until the due date is reached.*



## Online Text Assignments

How to access and submit an online text assignment:

1. Click on the assignment link.
2. Read the instructions provided by your instructor.
3. Click the **Add submission** button.
4. Type your response in the Online Text box and click **Save Changes**.

